

Office Space for Lease

HARVARD SQUARE



129 Mt. Auburn Street, Cambridge, MA

- 2,743 SF (sub-dividable)
- Lower level
- Kitchen area
- Next to Harvard Square Post Office
- Flexible floor plan
- One block from the Charles Hotel

**THE
DIAMOND
GROUP**
*Commercial Real Estate Brokerage
& Advisory Services*

FOR ALL QUESTIONS REGARDING
THIS PROPERTY PLEASE CONTACT:
RICHARD DIAMOND
817.661.1313 phone
617.661.1318 fax
rdiamond@thediamondgroupre.com

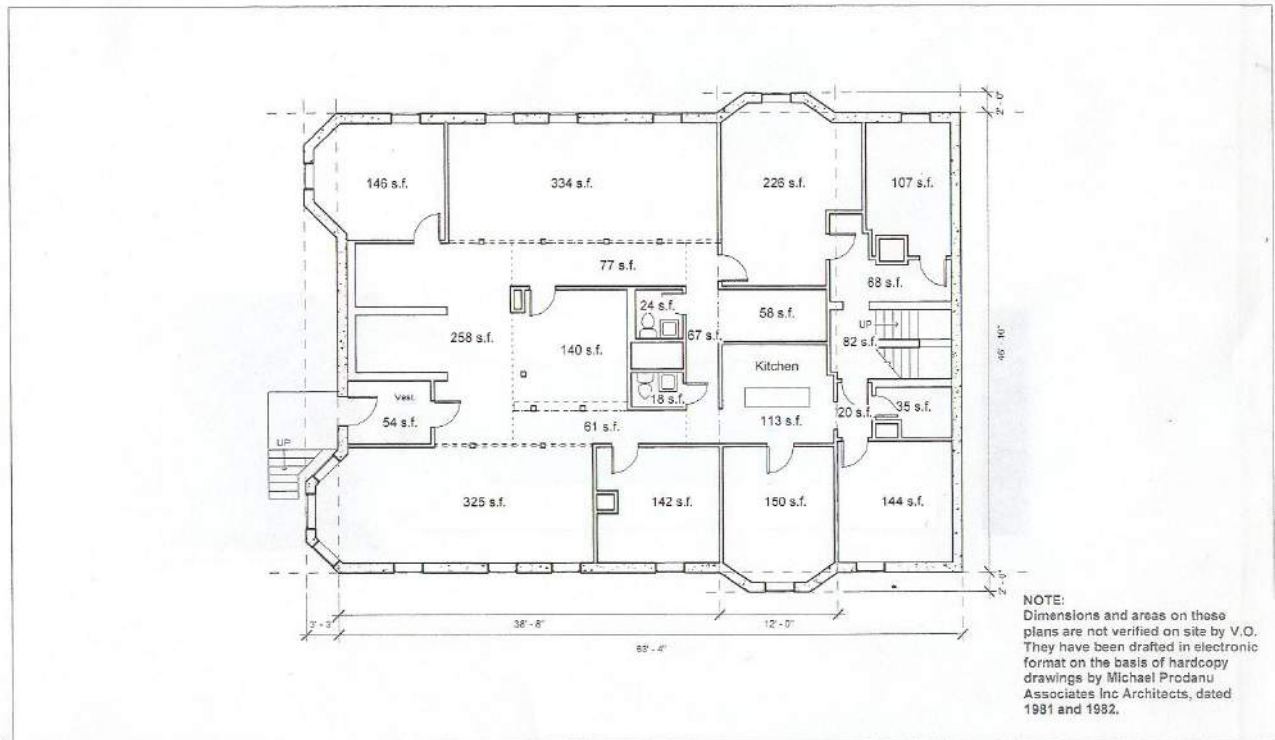


Office Space for Lease

HARVARD SQUARE

129 Mt. Auburn Street, Cambridge, MA

Floor Plan



NOTE:
Dimensions and areas on these plans are not verified on site by V.O. They have been drafted in electronic format on the basis of hardcopy drawings by Michael Prodanu Associates Inc Architects, dated 1981 and 1982.

6/28/2013 6:07:42 PM

V.O. Design-Build, Inc.
44 Spring Street, Suite 4
Watertown, MA 02472
www.vodsb.com
(617)600-8111

129 Mt. Auburn St. Cambridge, MA

REVISIONS		
No.	Description	Date

Existing Plan - Basement	
Project number	1301
Date	6/28/2013
Drawn by	AE
Checked by	VO
Scale 1/8" = 1'-0"	

A1

No warranty or representation, express or implied, is made as to the accuracy of the information contained herein, and same is submitted subject to errors, omissions, change of price, rental or other conditions, withdrawal without notice, and to any special listing conditions imposed by our principals. Seller or Landlord makes no representation as to the environmental or general condition of the property, and recommends purchaser's or tenant's independent investigation.

THE DIAMOND GROUP
Commercial Real Estate Brokerage
& Advisory Services

FOR ALL QUESTIONS REGARDING THIS PROPERTY PLEASE CONTACT:
RICHARD DIAMOND
817.661.1313 phone
617.661.1318 fax
rdiamond@thediamondgroupre.com